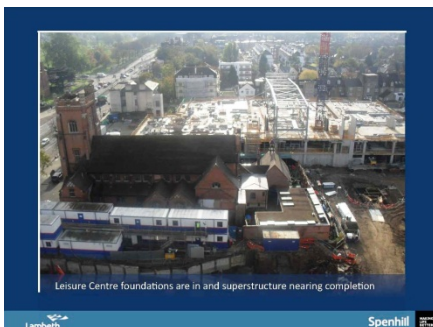


STREATHAM HUB DEVELOPMENT Newsletter

Project newsletter Issue No.10 January 2013

Second Public Meeting at The Hideaway



A second Public Meeting was held at The Hideaway in November, with just under a year to go before the opening of the new leisure centre and retail store. The meeting was well-attended and the audience received an update on the progress with the project and details of key forthcoming events leading up to the opening on 4th November 2013. Outline details of future employment opportunities were also provided. The presentation was followed by a question and answer session with representatives of Tesco and VINCI Construction UK.

The presentation and details of the answers given to the questions raised are available on our project website www.vinciconstruction.co.uk/streathamhub.

Progress



The superstructure to the Leisure Centre has now been completed after the erection of the roof steelwork over the ice rink slab during the past few weeks, and the roofing to the building is underway. Internally, much of the temporary 'falsework', the propping used to support the construction of the concrete floors, has been stripped out and the installation of the finishes and services to the sports hall and swimming pool is now underway. This includes the specialist plant that will treat and heat the water in the swimming pool and also the refrigeration equipment for the ice rink.

The structure to the retail store is nearing completion with the final floor slabs are being concreted this month. The steel structures to the residential blocks are starting to rise above the store as well as the link block located behind the United Reform Church.

The foundations to the permanent access ramp down to the basement car park have been constructed and the walls to the ramp are now being constructed.

At the rear of the site, the roofing to the service yard is underway and the main plant has been delivered into the basement of the Energy Centre. Externally, we are installing the underground attenuation tanks for the surface water drainage system. These are chambers that provide temporary storage of rainwater after heavy rain, before it is discharged slowly into the sewers.



Streatham High Road / Natal Road



The works to widen Streatham High Road that are currently in progress involve not only removing pavements and kerbs but also the relocation of a number of utility supplies. The temporary arrangements we put in place for both vehicles and pedestrian users were agreed with and are being monitored by TfL. The footpath in front of the project is particularly busy, and we would like to thank you for your patience and apologise for any inconvenience while these works are being carried out.

We are also currently constructing the new sewer which crosses Streatham High Road at the junction with Hopton Road.

We will be dismantling the tower crane to the Leisure Centre over a weekend in mid-February, now that the superstructure is complete. As a result, the top section of Natal Road will be closed to traffic for the Saturday and Sunday to allow access for the mobile crane and transport. We have written separately to the adjacent properties that will be directly affected.

Facts & Figures

Did you know:

- Amount of concrete used in the scheme would fill the main swimming pool over 50 times
- Amount of reinforcement and structural steel used in the scheme would weigh as much as 640 London double decker buses
- Amount of tarmac used in the scheme would surface approx. 4 miles of single carriageway
- Amount of glass to be used in the scheme would make over 100,000 wine bottles
- Achieved "Beyond Compliance" scores for the Considerate Constructors scheme. Less than 10% of schemes achieve this nationally
- We have achieved a 98% diversion of waste from landfill

Local Employment and Training



Last year concluded with a number of successes in our efforts to support the learning and development of young people in the area. Following the Budding Brunels programme held on the project last summer, Idiris Ali, a student at Lilian Bayliss Technology School in Kennington received a commendation at the 2012 Young Builder of the Year Awards. Another participant on the programme, Ariel Carter has gained an apprenticeship on a Crossrail Project being undertaken by VINCI Construction UK as a result of taking part. Last but by no means least, Shamin Nakalembe, a local engineering student, who joined VINCI on the project, has graduated with first class honours for her degree in Civil Engineering at Kingston University.

London Buses



We have received a number of queries during recent months concerning changes to bus stops in the area. These have been changed due to the completion of the new Bus Stand last August, and more recently by the road widening works along Streatham High Road. Readers may be interested to note that a route map for buses from Streatham may be found on TfL's website at <http://www.tfl.gov.uk/gettingaround/maps/buses/pdf/streatham-a4-031112.pdf>, and details of future service changes are available at: <http://www.tfl.gov.uk/assets/livetravelnews/realtime/buses/bus-service-changes.pdf>

Queries, Concerns or Suggestions

We recognise that construction works are unsettling to the general public, and we would repeat our assurance that we will take every opportunity to minimise any disruption or nuisance. If you have any queries or concerns about our works at any time, Peter Muncaster, our Stakeholder Manager, or I can be contacted on the telephone numbers below.

Steve Diggins
Project Director
VINCI Construction UK Ltd

Peter Muncaster 07816 515788
Steve Diggins 0203 265 1900
E-mail streathamhub.public@vinciconstruction.co.uk



Project Details

The exciting new Streatham Hub development includes a new leisure centre for the residents of Lambeth, featuring a 25m, 6-lane swimming pool and 13m learner pool, 4-court sports hall, full size ice rink and a health and fitness suite. The remainder of the development comprises a retail store, new TfL bus stand adjacent to Streatham railway station and a mix of private, shared ownership and affordable residential accommodation, all served by an underground car park. Public space will be created around the Streatham United Reform Church.

www.vinciconstruction.co.uk/streathamhub

Contact Us

Address: VINCI Construction UK Ltd, 2nd Floor, Estra House, Station Approach, Streatham, SW16 6HW. **Tel:** 0203 265 1900